

2013-2014 FREMONT ROTARY "PATHFINDERS"

Level III: Minimum 90% attendance, participated in at least three club projects, and donated at least \$100 to the Rotary Foundation.

Level II: Minimum 75% attendance, participated in at least two club projects, and donated at least \$100 to the Rotary Foundation.

Level I: Minimum 50% attendance, participated in at least one club project, and donated to the Rotary Foundation.

Level I			Level II	Level III
Barry Benson	Dick Holmen	Darrell Puls	Ken Beebe	Gary Bolton
Scott Brettmann	Mark Johnson	Bob Roesch	Thom Christensen	Jim Cunningham
Bill Dugan	Paul Johnson		Keith Lallman	Dick Hendriksen
Bill C. Dugan	Matt Kranz	Mary Sendgraff	Wayne McGillick	Don Kahnk
Jeff Elliott	Ron Kranz	Ann Stephens	Dave Pinkall	Sherry Leriger
Todd Hansen	Duane Krause	Janell Tessari	Shelly Sandeen	Steve Tellatin
Jerry Harnisch	Pam Murphy		Dave Shelso	
Bob Hillis	Ronda Niehaus	Ron Tillery	Tom Waring	
			Jim Windeshausen	

PAUL HARRIS 'FELLOWS'

\$6,000 Plateau	\$5,000 Plateau	\$4,000 Plateau	\$3,000 Plateau	
Lee Paden	Sid Dillon, Sr.	Charlie Diers	Gary Bolton	Don Kahnk
David Simmons	Dale Olson	Sid Dillon, Jr.	Tom Christensen	Ron Kranz
		Rupert Dunklau	Jack Ekeler	Duane Krause
			Dick Hendrickson	Russ Peterson, Jr.
			Joel Jelkin	Ann Stephens
\$2,000 Plateau	Barry Benson	Mark Johnson	Tom Milliken	Darrell Puls
	Bill Dugan	Rod Koerber	Dave Mitchell	Bill Vobejda
	Jerry Harnisch	Keith Lallman	Steve Navarrette	Joan Ronan
	Dave Hartmann	Sherry Leriger	Steve Pribnow	Tom Waring
	Greg Haskins	Wayne McGillick	Mike Prokop	Don Schneider
\$1,000 Plateau	Ken Beebe	Jim Cunningham	Paul Johnson	Marv Welstead
	Jennifer Benson	Ryan Fiala	Matt Kranz	Phil Wood
	J.J. Bixby	Bill Fitzgerald	Nick Lamme	Ken Beebe
	Pat Booth	Brian Foy	Bob Missel	John Sajevic
	Marlin Brabec	Todd Hansen	Pam Murphy	John Sajevic
	Joanne Bracker	Jerry Hendrickson	Vince O'Connor	Mary Sendgraff
	Scott Brettmann	Bob Hillis	Dave Pinkall	Tom Thomsen
	Kirk Brown	Dick Holmen	Jerry Rinne	Ray Sendgraff
			Martin Trautrimas	
			Steve Sexton	
			Jim Windeshausen	
			Dave Shelso	
			Mike Wiseman	

PAUL HARRIS 'SUSTAINING MEMBERS'

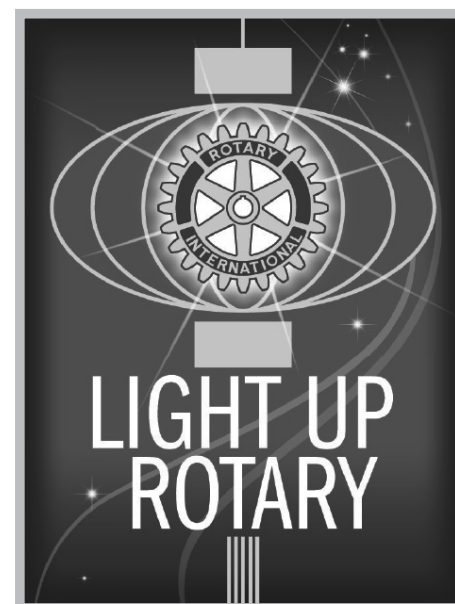
Members who are working toward designation as a Paul Harris Fellow by contributing at least \$100 to the Rotary Foundation during 2014-2015

Timothy Bryson	Jeff Elliott	Brian Kudrna	Shelly Sandeen	Chuck Story
Carter Burnside	Laura Essay	Lynn Lamprecht	Brad Schiermeyer	Jim Thayer
Dian Christensen Hillis	Scott Getzschmann	Scott Meister	Mark Shepard	Ron Tillery
Ted DeTurk	Ollie Glass	Tim Militti	Doug Shiple	Mike Wehling
Bill C. Dugan	Ron Gross	Ronda Niehaus	Scott Stinnette	Rachel Wise
Kevin Airleywine	Barb Johnson	Bob Roesch		

Fremont Rotary Club

Fremont, Nebraska 68025

Chartered 1919



*Is it the truth?
Is it fair to all concerned?
Will it build good-will and better friendship?
Will it be beneficial to all concerned?*

www.rotaryfremont.org



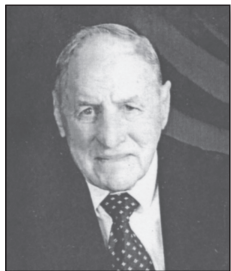
Find us on Facebook

The Spokesman



The 8th Day of May
in the year of President
Steve Tellatin 2014-2015

Matt Kranz hosting today's program:



Neil Shilke

Neil is married to his wife Bonnie, they have a daughter Lisa and son-in-law Brad and their grandson Nick.

Neil graduated from Country Schol District 25 as Valedictorian, second in class. Neil went on to graduate from Fremont High School and then on to Midland University to which he later

went on to William and Mary Law School (law review editor and first in class).

- Great many types of work for great many employers to finance education
- During the Korean War, enlisted ARMY 82nd Airborne (avoided Korea - China learned I was coming and quickly signed an armistice).
- Attorney on Phillips Petroleum legal staff
- 50 years with Sidner Law Firm
- Taught communications law for many years at Midland
- Chairman and Board Member - many civic and charity organizations including Nebraska Softball Foundation and Chairman - American Legion Baseball Advisory - held three national offices in three national organizations.
- Received an Honorary Doctorate from Midland
- Member - Nebraska Tennis Hall of Fame
- Awarded - Nebraska Outstanding Young Man
- Mentored and coached American Legion Midget Baseball Team
- Most Important - Cashed Rotary Cookie League Team - Awarded good Sportsmanship Trophy in Prague Tournament



Rotary's Core Statement:

Rotary is a worldwide network of inspired individuals who translate their passions into relevant social causes to change lives in communities.

OPEN FOR BUSINESS...



Professional Investment Management - One Fixed Price

One Price Portfolio is an independent, national wealth management firm specializing in managing investment portfolios for a capped fee. WE serve

as a Fiduciary on our managed accounts so our clients can rest assured we have their best interests in mind.

Phil Wood, President and founder, has been in the financial services industry since 1988 and holds many industry registrations. In addition to overseeing the strategic direction of the company as a whole Phil continues to be a practicing Wealth Advisor.

Committed to providing the highest possible level of service, the firm matches new clients to a team of specialists. This team includes a dedicated Wealth Advisor, Relationship Manager, and Service Associate to take care of each client's unique needs.

For more information please visit <http://www.onepriceportfolio.com>

FREMONT ROTARY CLUB WEBSITE

Service above Self

www.fremontrotary.org

2014-2015 EXECUTIVE COMMITTEE

OFFICERS

Steve Tellatin
President

Gary Bolton
Vice President

Don Kahnk
Secretary

Dave Hartmann
Treasurer

Sherry Leriger
Past President

BOARD OF DIRECTORS

2015
Jennifer Benson
Jessica Janssen
Janell Tessari

2016
Thom Christensen
Ron Tillery
Mike Wehling

2017
Carter Burnside
Matt Kranz
Shelly Sandeen

GOVERNOR OF DISTRICT 5650

Brian Moon

PAST PRESIDENTS' ADVISORY COUNCIL

Sherry Leriger
Board Representative

Shelly Sandeen
Todd Hansen

PROGRAM PLANNING COMMITTEES

Dian Christensen Hillis
Membership

Public Relations

Gary Bolton
Todd Hansen
Rotary Foundation

Bill C. Dugan
Service